

Technical Data

KLUDI BALANCE
concealed thermostatic fitting
trim set with functional unit
PN 10

Ref.:
527299175

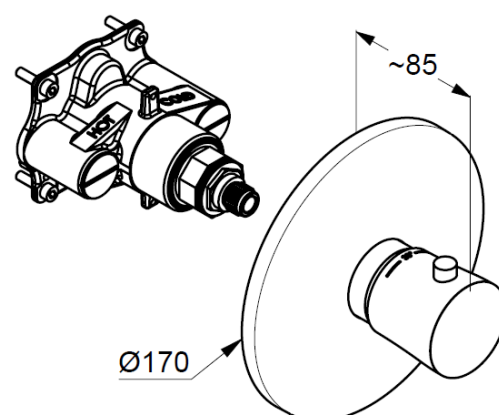
Finishes:
91 white/ chrome

Product description
Manufacturer KLUDI GmbH & Co. KG
Typ: KLUDI BALANCE
concealed thermostatic fitting
Ref.: 527299175
concealed thermostatic fitting
pre installation set KLUDI FLEXX.BOXX Art. Nr. 88011
trim set with functional unit
vertical wall mounted
cylindricity handle, metal
without shutt-off-valve
temperature handle with hotwater safety at 38°C
flow rate at 3 bar = 40 l/ min.
with integrated back flow preventer

Product picture



Dimensional drawing



Flow rate diagram

