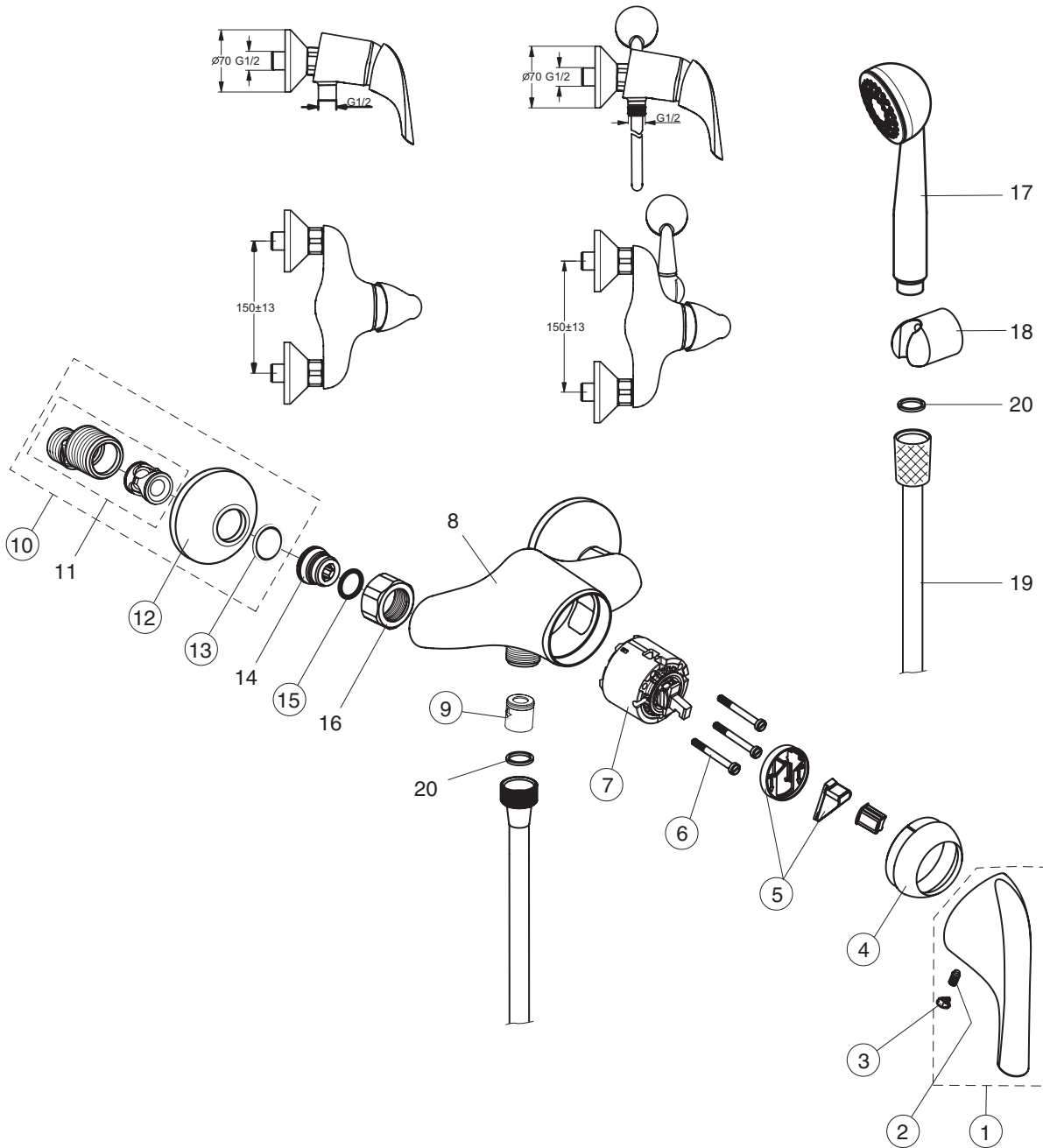


# CERAPLAN NEW (B3699AA;B4527AA)

*Ideal  
Standard*



Pos.	Signify	Spare parts-Nr.	Quantity	Pos.	Signify	Spare parts-Nr.	Quantity
1	Handle compl.	B964882AA	1 Pcs.	13	Fibre washer for non-return valve	A961139NU	2 Pcs.
2	Handle screw M5x10 DIN915	A963309NU	1 Pcs.	14	Sealing M19x1.5LH		2 Pcs.
3	Cap(Blue/Red)	A963054NU	1 Pcs.	15	Ersatz O-Ring $\varnothing 15.6 \times 1.78$	A961182NU	2 Pcs.
4	Cap CERAPLAN	A964525AA	1 Pcs.	16	Coupling nut		2 Pcs.
5	Volume stop	A960080NU	1 Pcs.				
6	Screw M4x39	A963176NU	3 Pcs.	17	Shower Tosca 2 functional w/logo IS		1 Pcs.
7	Cartridge $\varnothing 47$ mm (90 piece)	A960500NU	1 Pcs.	18	Wall bracket fixed NIKLES		1 Pcs.
8	Body shower		1 Pcs.	19	Metal hose,L1500,double clenched		1 Pcs.
9	Non return valve	A962594NU	1 Pcs.	20	Fiberring $\varnothing 16 \times 13 \times 1.5$		2 Pcs.
10	S-connection compl.	A963490AA	1 Pcs.				
11	S-connector G3/4		2 Pcs.				
12	Rosette	A963489AA	2 Pcs.				