

## Technical Data

KLUDI BALANCE  
concealed thermostatic fitting  
trim set with functional unit  
PN 10

Ref.:  
527298775

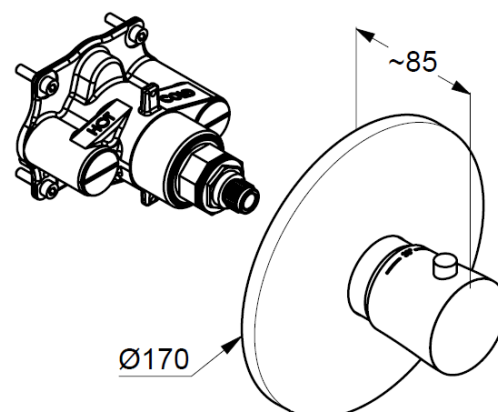
Finishes:  
87 black matt finished / chrome

Product description  
Manufacturer KLUDI GmbH & Co. KG  
Typ: KLUDI BALANCE  
concealed thermostatic fitting  
Ref.: 527298775  
concealed thermostatic fitting  
pre installation set KLUDI FLEXX.BOXX Art. Nr. 88011  
trim set with functional unit  
vertical wall mounted  
cylindricity handle, metal  
without shutt-off-valve  
temperature handle with hotwater safety at 38°C  
flow rate at 3 bar = 40 l/ min.  
with integrated back flow preventer

Product picture



Dimensional drawing



Flow rate diagram

