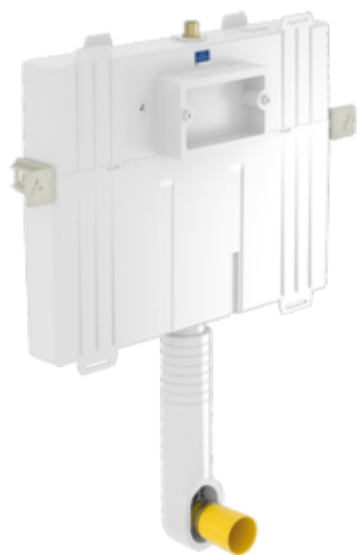



# WC-SYSTEM FOR BRICK-WALL CONSTRUCTION VICONNECT

## PRODUCT INFORMATION

### 1 . POSITION



Model	922482
Collection	ViConnect
PROJECTS	 PLUS
Width	648 mm
Height	740 mm
Depth	80 mm
Weight	4 kg
description	installation depth 80 mm white flushing pipe, flushing pipe connector, protection cap and white rosette, with fixing brackets, fastening materials, reinforcing mesh, without flush plate Individual packaging materials For combination with: for wall-mounted WC, for floor-standing WC, back to wall front operated, button function transmitted to drain fitting via flexible cables, connection to flush plate via bayonet joint, with protection cap for the flushing pipe concealed cistern with insulation against condensation with dual flush 3/6 l, adjustable to 3/4,5 l, maximal flush quantity 7,5 l, filling valve Noise Class I, angle valve connection set G1/2, protection box for access opening can be cut to size, adjustable flushing pipe bend with insulation and protection cap, certification marks for concealed cistern: Noise Class I,

## PROJECTS

### Specification texts

ViConnect; Concealed cistern Compact; Size: 648 x 740/825 x 80 mm; installation depth 80 mm; white flushing pipe, flushing pipe connector, protection cap and white rosette, with fixing brackets, fastening materials, reinforcing mesh, without flush plate; Individual packaging materials; For combination with: for wall-mounted WC, for floor-standing WC, back to wall; front operated, button function transmitted to drain fitting via flexible cables, connection to flush plate via bayonet joint, with protection cap for the flushing pipe; concealed cistern with insulation against condensation with dual flush 3/6 l, adjustable to 3/4,5 l, maximal flush quantity 7,5 l, filling valve Noise Class I, angle valve connection set G1/2, protection box for access opening can be cut to size, adjustable flushing pipe bend with insulation and protection cap, certification marks for concealed cistern: Noise Class I,

## COLOURS

92248200 4051202338282

## TECHNICAL DRAWINGS

**922482**

